

The background of the slide features a night-time photograph of an industrial facility, likely a refinery or chemical plant, with numerous tall distillation columns and structures illuminated by warm lights. Overlaid on this scene is a complex network of white lines connecting various glowing nodes, representing a digital or data network. The overall color palette is dominated by deep blues and teals, with the industrial lights providing a warm contrast.

# WORKFORCE TRANSFORMATION

---

**SURAJ PLAKKOTE**

MAY, 2024

**Honeywell**

Honeywell Confidential - © 2024 by Honeywell International Inc. All rights reserved.



**INDUSTRY CHALLENGES**

**ASPECTS OF WORKFORCE TRANSFORMATION**

**COMPETENCY – SMART TRAINING ROOMS**

**PRODUCTIVITY – CONNECTED WORKER**

# INDUSTRY CHALLENGES



## Workforce Churn (Skillset shortage)

- New Workforce - learn faster (upskill), reduce time to competency
- Jobs are transformed by the technologies of the 4th Industrial Revolution – Existing Workforce must be reskilled



## Improve Productivity (Do more with Less)

- Provide right tools that help workers perform their tasks efficiently
- Make workforce ready to use Software & Analytics on demand, improve situational awareness



## Improve Collaboration

- Unite Machine to machine, human to machine and human to human collaboration / interaction that turns insights into intelligence, and intelligence into action



## Jobs Evolving Continuously

- Increasing complexity of assets & process
- Due to changing business needs and technological landscape, organizations' skill requirements are evolving and emerging – framework for continuous monitoring of skills gap and improvement is need of the hour

**1 INCIDENT EVERY 3 DAYS - (Petrochemicals Industry – Source: ASM reports)**

# WORKFORCE TRANSFORMATION

## COMPETENCY

- 01** Blended learning approach
- 02** Personalized and Self-paced learning
- 03** Evolved Evaluation

## PRODUCTIVITY

- 01** Enhanced Productivity
- 02** Better communication and Integrated Systems
- 03** Automation and AI





# COMPETENCY – SMART TRAINING ROOM

# SMART TRAINING ROOMS

Innovative Concept that enhances the effectiveness of training sessions by leveraging technologies for interactive and engaging learning experiences by bringing Physical and Digital worlds together

- Increase Interactivity
- Improve Real time collaboration
- Offer Remote training capabilities
- Improve Content Delivery



01

## DESIGN, IMPLEMENT & MAINTAIN TRAINING CENTER

- Honeywell can support customer with design, implement and maintenance of training centers to deliver the best in-class experience to students

02

## AUGMENTED REALITY

- Using enhanced, interactive version of on field equipment's and tools through digital elements

03

## VIRTUAL REALITY

- Honeywell Virtual Reality solution – Immersive Field Simulator aimed for field Operations, Maintenance and HSE teams.
- Honeywell IFS is closely integrated to the OTS systems.

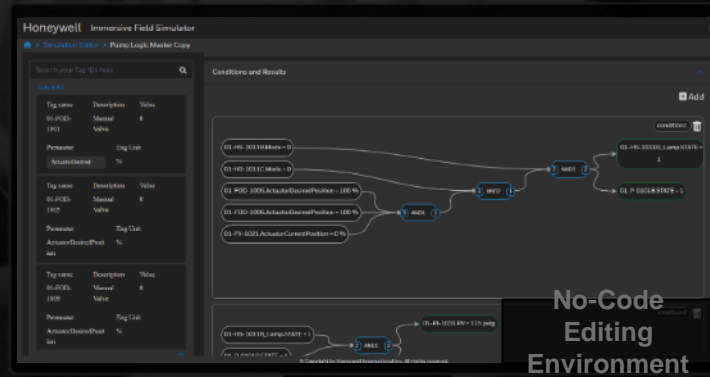


TECHNOLOGY ENABLER



# IMMERSIVE FIELD SIMULATOR

Boost workforce efficiency and reliability with Honeywell's Immersive Field Simulator (IFS), utilizing digital twin technology to create an immersive virtual environment for plant standards simulation.



A realistic, safe, and standardized training environment.



Inbuilt authoring tools for specific scenarios.



Trigger disaster and abnormal scenarios based on operator action.



Triggers process value-based animations.



Automate portions of a procedure typically done by the panel operator.



Ability to create standalone lessons or OTS connected lessons.



**Honeywell**

# IMMERSIVE FIELD SIMULATOR

## HONEYWELL IMMERSIVE EQUIPMENT VIEWS

Train operators and technicians in surface detection, object placement, and asset observation to perform step-by-step tasks like equipment assembly or dismantling. This enhances asset understanding and facilitates troubleshooting using augmented reality.

- An Augmented Reality Feature of IFS for Digital augmentation of equipment and simplifying complex tasks
- Digital augmentation blends real-life environments with digital elements for meaningful interactions.
- Access additional information and immersive, detailed visuals on a handheld device
- Augmented reality can identify machinery and display step-by-step instructions for use.

3D visualization

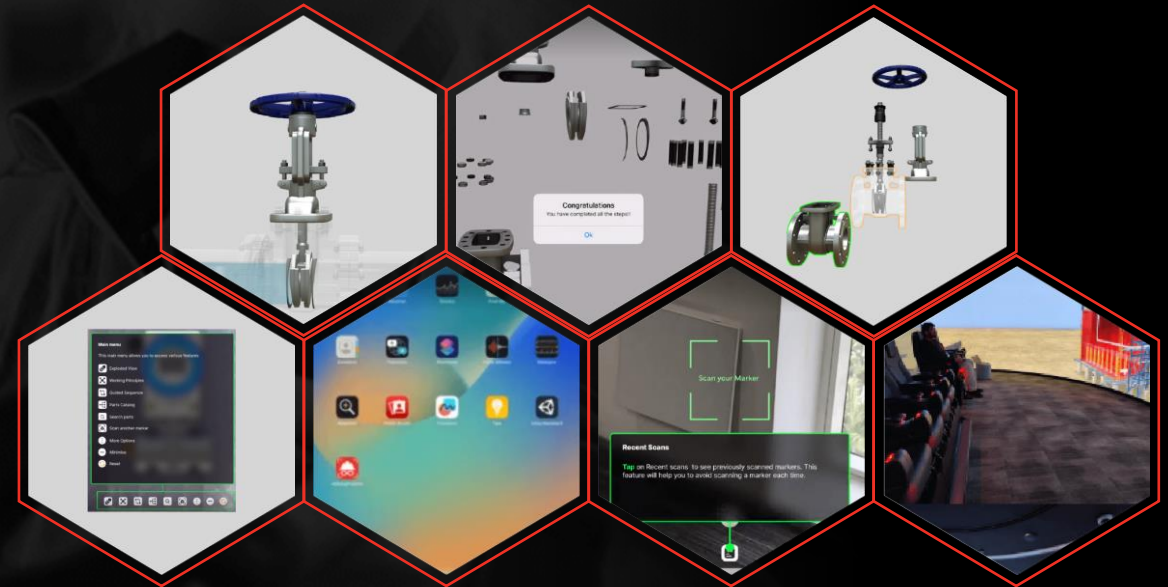
Touch interactions

Interactive animations

Zoom, rotate and reposition

Custom sequence creation

InDepth Exploded view



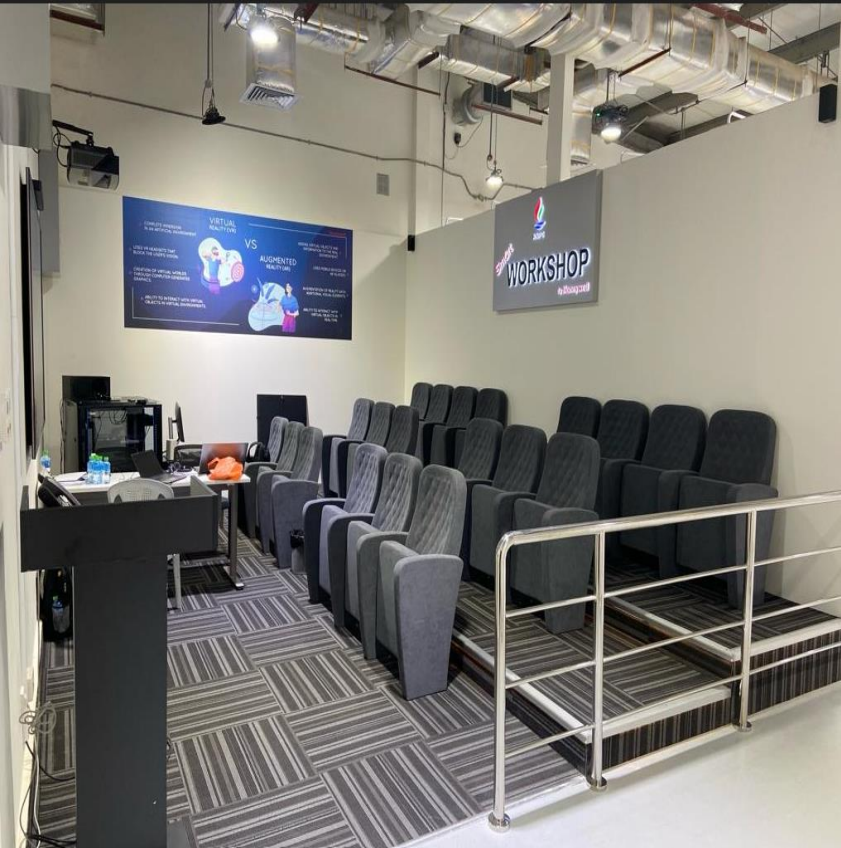


A photograph of an industrial facility, likely a refinery or chemical plant, featuring large, complex piping systems and heat exchangers. The pipes are made of polished metal and are arranged in a dense, interconnected network. The background shows a clear sky and the structural elements of the plant, including ladders and walkways.

# REFERENCES & CASE STUDIES



# SMART TRAINING ROOM



# BLENDED LEARNING



# Immersive Field Simulator for Cheniere Energy

## THE CHALLENGE

Need for a collaborate learning center in a safe environment



## OUR APPROACH

Collaboration training center with Immersive Field Simulator

- ✓ Provide realistic & safe environment to train field operators
- ✓ Integration with OTS to train panel and field operators together

## THE RESULT

- Improved communication & teamwork
- Accelerated learning, from training room to the field
- Increased efficiency
- Reduced costly errors



# **PRODUCTIVITY – CONNECTED WORKER**

**Honeywell**

*Honeywell Confidential - © 2024 by Honeywell International Inc. All rights reserved.*



# CONNECTED WORKER ENABLERS

## TECHNOLOGY & ASSETS



## COMMUNICATION & COLLABORATION PLATFORM



## DATA ANALYTICS PLATFORMS

## INTEGRATION & SUSTENANCE

# FIELD AI SOLUTION | FIELD PKS

## ERP SYSTEM



- Work Order
- Past Maintenance Records
- Spare Inventory



## DCS



- Realtime & Historical Data
- Alarm & Trend



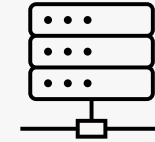
## DOCUMENT REPOSITORY



- OEM Documentation
- Plant Specific Procedures
- Safety Guidelines



## OT SYSTEMS



- Alarm Management System
- Asset Performance Management
- Operations Management



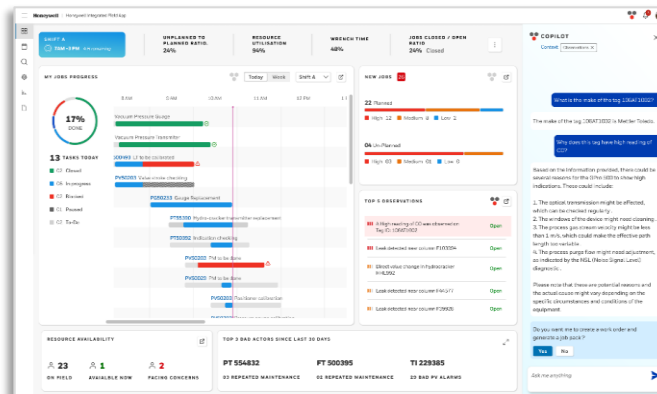
## HONEYWELL FORGE AI PLATFORM

01



### SUPERVISOR & PLANNER

- Job Pack Creation
- Troubleshooting guide
- Analytics & Reporting

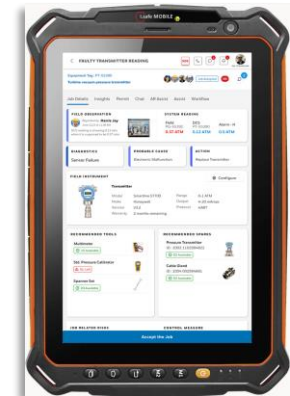


02



### FIELD OPERATOR / TECHNICIAN

- Gen AI based Assist
- Contextual Information in the field



CONTEXTUAL INFORMATION & TROUBLESHOOTING – ENABLED BY AI



# CONNECTED WORKER FUTURE STATE

## MANAGERS' DASHBOARD

- Task planning , scheduling & assignment
- ePermit / task status
- Workforce Competency Levels

- Field workers' location and safety status
- Report generation
- Operational Efficiency KPIs

### Standardized 3rd party interfaces

- LMS
- SAP
- Doc Sys
- ePermit
- OPC Interface

1

### GENERATIVE AI MODEL CHAT BOT



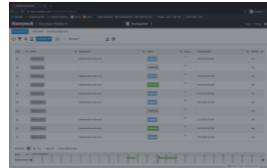
2

### PLANT DIGITAL TWIN



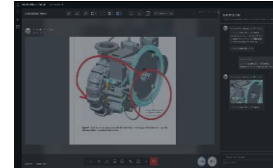
3

### TASK PLANNER



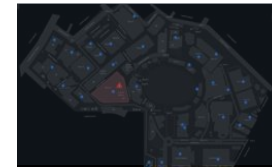
4

### COLLABORATION



5

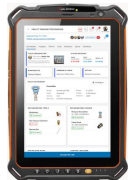
### LOCATION ENGINE



### Honeywell System Interfaces

- DCS & Safety
- Historian
- Forge APM
- HFOM
- FDM

### A day in the life of a worker



PREPARE

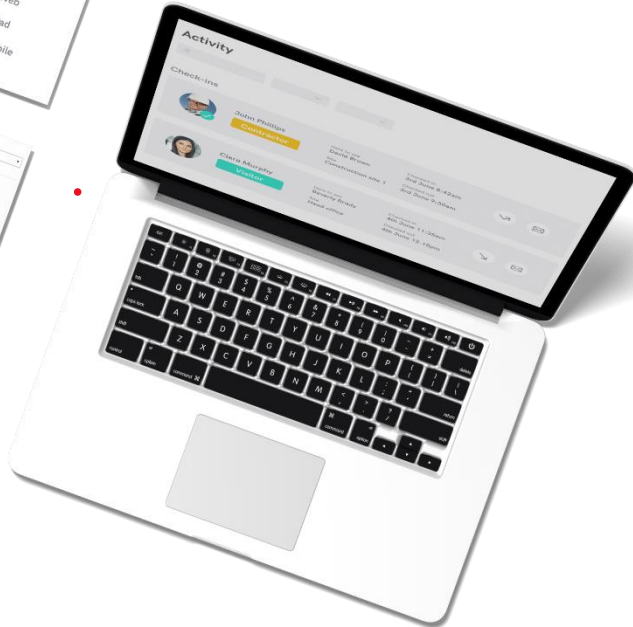
EXECUTE

TROUBLESHOOT

UPDATE RESULTS



# COMPETENCY & PRODUCTIVITY



## FASTER STARTUP WITH IMPROVED COMPETENCY

Comprehensive operator training and competency programs

## DIGITIZED OPERATOR ROUNDS

Improve operator productivity and avoid operator error with efficient digital rounds

## FIELD WORKER MANAGEMENT

Improve effectiveness of field workers performing procedural tasks

## STANDARDIZED PROCEDURES

Ensure compliance and avoid process errors through digitized procedures

\*Calculation based on observed outcomes of Honeywell Forge & Honeywell Sine customers in the period 2019-2022.

## THE HONEYWELL ADVANTAGE

Up to **50%**

Reduction in Training Time

Up to **20%**

Improved Worker Utilization

Up to **20%**

Reduction in variation to plan

**2X**

Improved Worker Productivity



# DIGITAL SERVICES OFFERINGS



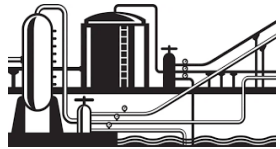
**Sense**



**Make-Sense**



**Decide & Act**



Process

Connected Services

Process Monitor

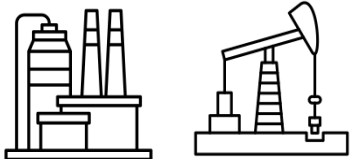
Benefits: \$1-5M/Unit

Process Technology Analytics,  
Exception Based Alerts,  
Benchmarking

Connected Services

Performance Reviews with  
UOP Experts  
PremierPLUS Services

- ✓ Improved Production
- ✓ Better adaptability to varying conditions



Asset

Performance Management Solutions

Plant Historian & Insight  
Process Monitor

Benefits: \$5-10M/Unit

Asset Performance Management

Performance Management Solutions

Performance Solutions – Elite,  
EPP, Heater Performance  
Audit services etc

- ✓ Optimal Energy Consumption
- ✓ Improved Operator Productivity
- ✓ Faster On-boarding



People

Training & Simulation

Competency MAP  
Connected Worker

Benefits: \$10M+

Curated Training  
Operator Training Simulator  
Immersive Field Experience

Training & Simulation

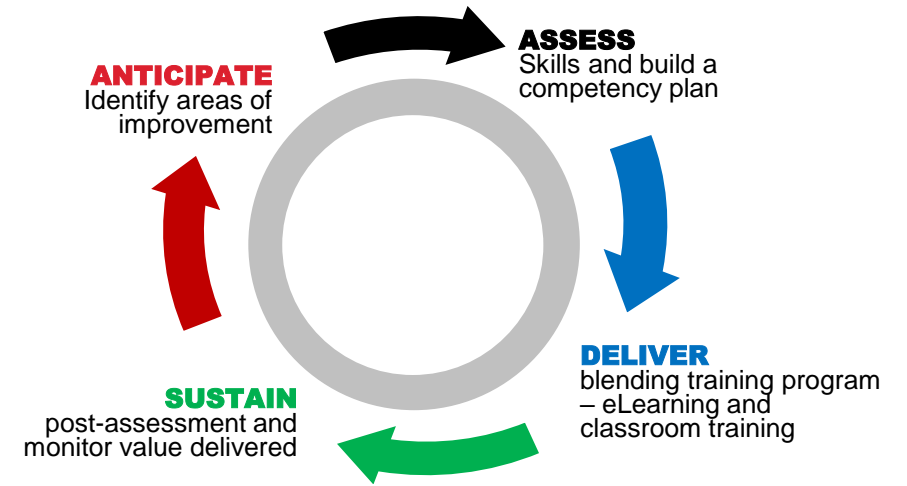
Curriculum based Approach,  
Outcome Based Training

**Technology + UOP Expertise = Digital Services Differentiated Value**

# PEOPLE | TRAINING AND SIMULATIONS

- **Hiring consultation**, including strategy review, job description review & CV assessment to identify target hires
- **Learning Management System** integration and hiring consultations
- **Skills assessment and identification** for different roles, including process engineers, safety, operators
- **Reskilling and upskilling** the workforce  
Onboarding/Ramp up → Performing → Expert Development
- **Blended training** combining eLearning modules, in-person/virtual classroom training, and on-the-job training

## End-to-End Competency Offering

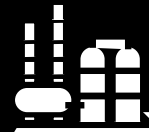


## Benefits of Competency Management



### Organizational Benefits

- Reduced time to competency
- Better knowledge retention
- Improved hiring & retention of talent
- Development of in-house expertise



### Operational Benefits

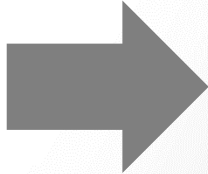
- Higher profitability and safety
- Better operational performance
- Reduced unplanned downtime

Partner with Customer to Assess Skills with Competency Mapping & Increase Training Scope



## ENHANCE – LEARNING MANAGEMENT SYSTEM

UOP Content, Training Needs Assessment, Curriculum Design/Adjustment, Train the Trainer



### Invest In Region To Realize Value Of...

- Improved operations & profitability
- Reduced downtime & abnormal situations
- Improved employee engagement & retention
- Reduced safety and operational risk



### AVAILABILITY - NOW

- Residency Program
- 1600+ Hours Industry Fundamentals
- 22 Categories
- General Web-Based Training for Safety, Operations, Maintenance
- Training Needs/Skills Assessment Evaluation
- UOP Licensed eContent
- Interactive Tools & Guides
- CMAP Framework
- UOP Technology Framework
- Needs Analysis
- Development of Activity

- Explore Curated Training Opportunities to Identify, Resolve, & Measure key challenges
- Scheduled Course List
- Scheduled UOP Courses
- COE Roadmap
- Includes Pre & Post Tests
- Builds on Pre-requisite WBT
- GA-Industry content

### AVAILABILITY - ONGOING

- Residency Program In-House
- Continuous ILT learning
- Continuing Education
- Customized eLearning WBT
- OTS/IFS Exercise
- KSA Synergy Identification – UOP Based
- Virtual Workshops
- Supervisors to Encourage Preparation and Interaction

### AVAILABILITY - ONGOING

- Virtual Progress Meetings
- Sustain
- Optional: OJT Projects
- Annual Blended Training Cadence
- Persona Specific
  - Process Engineer
  - Supervisor
  - Operator
  - Inspection Lab/QC
- Your Time Assessments and Tests
- Continuous Improvement metrics







**Honeywell**

*Honeywell Confidential - © 2024 by Honeywell International Inc. All rights reserved.*